

WSM

WORKSHOP MANUAL

GZD15

Kubota

TO THE READER

This Workshop Manual has been prepared to provide servicing personnel with information on the mechanism, service and maintenance of GZD15. It is divided into two parts, "Mechanism" and "Servicing" for each section.

■ Mechanism

Information on the features and new mechanisms are described. This information should be understood before proceeding with troubleshooting, disassembling and servicing.

■ Servicing

The heading "General" includes general precautions, check and maintenance and special tools. Other section, there are troubleshooting, checking and adjusting, disassembling and assembling, and servicing which cover procedures, precautions, factory specifications and allowable limits.

All information illustrations and specifications contained in this manual are based on the latest product information available at the time of publication.

The right is reserved to make changes in all information at any time without notice.

December 2003

© KUBOTA Corporation 2003

000001494E

SAFETY FIRST

This symbol, the industry's "Safety Alert Symbol" is used throughout this manual and on labels on the machine itself to warn of the possibility of personal injury. Read these instructions carefully. It is essential that you read the instructions and safety regulations before you attempt to repair or use this unit.

DANGER

- Indicates an imminently hazardous situation which, if not avoided, will result in death or serious injury.

WARNING

- Indicates a potentially hazardous situation which, if not avoided, could result in death or serious injury.

CAUTION

- Indicates a potentially hazardous situation which, if not avoided, may result in minor or moderate injury.

■ IMPORTANT

- Indicates that equipment or property damage could result if instructions are not followed.

■ NOTE

- Gives helpful information.

000000752E

BEFORE SERVICING AND REPAIRING

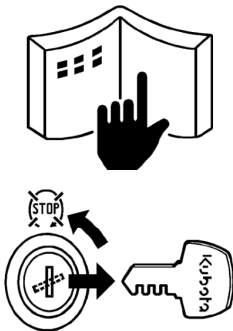
- Read all instructions and safety instructions in this manual and on your machine safety decals.
- Clean the work area and machine.
- Park the machine on a firm and level ground, and set the parking brake.
- Lower the implement to the ground.
- Stop the engine, and remove the key
- Disconnect the battery negative cable
- Hang a **"DO NOT OPERATE"** tag in operator station.

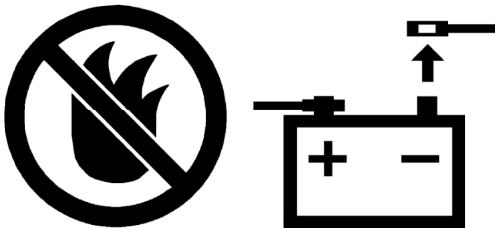
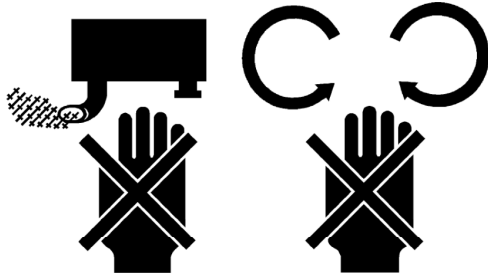
000000753E

SAFETY STARTING

- Do not start the engine by shorting across starter terminals or bypassing the safety start switch.
- Do not alter or remove any part of machine safety system.
- Before starting the engine, make sure that all shift levers are in neutral positions or in disengaged positions.
- Never start the engine while standing on ground. Start the engine only from operator's seat.

000000754E





SAFETY WORKING

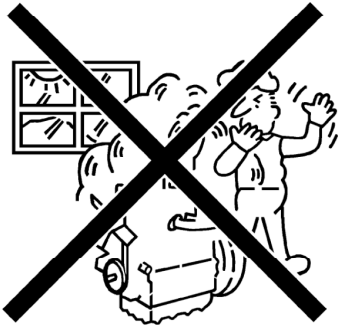
- Do not work on the machine while under the influence of alcohol, medication, or other substances or while fatigued.
- Wear close fitting clothing and safety equipment appropriate to the job.
- Use tools appropriate to the work. Makeshift tools, parts, and procedures are not recommended.
- When servicing is performed together by two or more persons, take care to perform all work safely.
- Do not work under the machine that is supported solely by a jack. Always support the machine by safety stands.
- Do not touch the rotating or hot parts while the engine is running.
- Never remove the radiator cap while the engine is running, or immediately after stopping. Otherwise, hot water will spout out from radiator. Only remove radiator cap when cool enough to touch with bare hands. Slowly loosen the cap to first stop to relieve pressure before removing completely.
- Escaping fluid (fuel or hydraulic oil) under pressure can penetrate the skin causing serious injury. Relieve pressure before disconnecting hydraulic or fuel lines. Tighten all connections before applying pressure.

000000755E

AVOID FIRES

- Fuel is extremely flammable and explosive under certain conditions. Do not smoke or allow flames or sparks in your working area.
- To avoid sparks from an accidental short circuit, always disconnect the battery negative cable first and connect it last.
- Battery gas can explode. Keep sparks and open flame away from the top of battery, especially when charging the battery.
- Make sure that no fuel has been spilled on the engine.

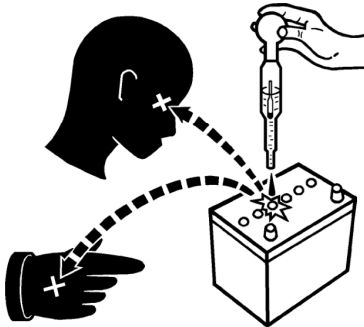
000000756E



VENTILATE WORK AREA

- If the engine must be running to do some work, make sure the area is well ventilated. Never run the engine in a closed area. The exhaust gas contains poisonous carbon monoxide.

000000757E



PREVENT ACID BURNS

- Sulfuric acid in battery electrolyte is poisonous. It is strong enough to burn skin, clothing and cause blindness if splashed into eyes. Keep electrolyte away from eyes, hands and clothing. If you spill electrolyte on yourself, flush with water, and get medical attention immediately.

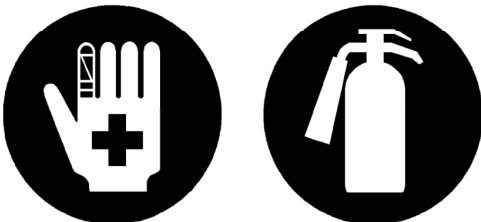
000000758E



DISPOSE OF FLUIDS PROPERLY

- Do not pour fluids into the ground, down a drain, or into a stream, pond, or lake. Observe relevant environmental protection regulations when disposing of oil, fuel, coolant, electrolyte and other harmful waste.

000000759E



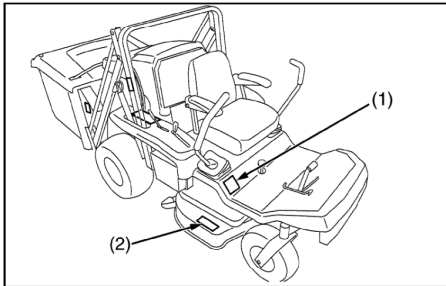
PREPARE FOR EMERGENCIES

- Keep a first aid kit and fire extinguisher handy at all times.
- Keep emergency numbers for doctors, ambulance service, hospital and fire department near your telephone.

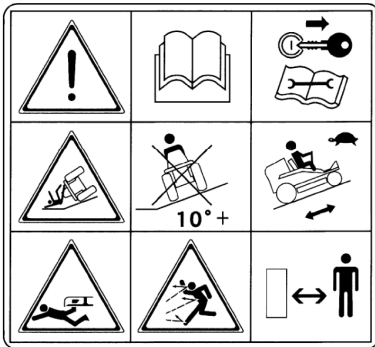
000000760E

SAFETY DECALS

The following safety decals are installed on the machine. If a decal becomes damaged, illegible or is not on the machine, replace it. The decal part number is listed in the parts list.



(1) Part No. K2011-6581-1



TO AVOID INJURY OR DEATH:

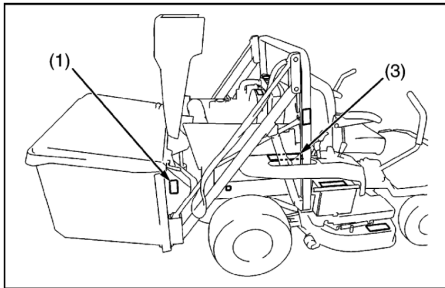
- Read and understand Operator's Manual.
- Shut off engine and remove key before servicing.
- DO NOT operate where machine could slip or tip.
- Mow across SLOPES-NOT UP and Down.
- DO NOT allow any bystanders or children around or near machine at all times when the engine is running.

(2) Part No. K5243-7311-1

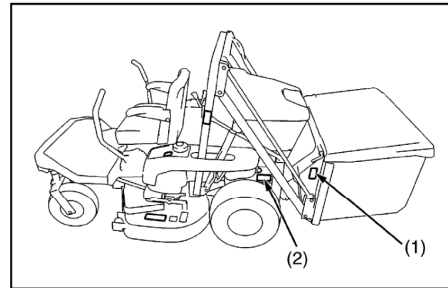
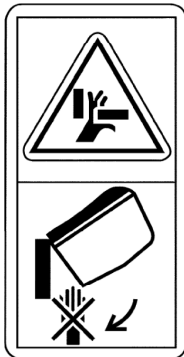


ROTATING BLADES HAZARDOUS:

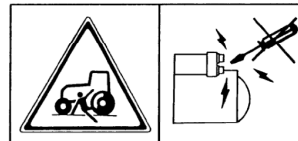
- DO NOT put hands or feet into mower when engine is running.
- Keep all shields and guards in place.



(1) Part No. K6082-6582-1



(1) Part No. K3512-4718-1



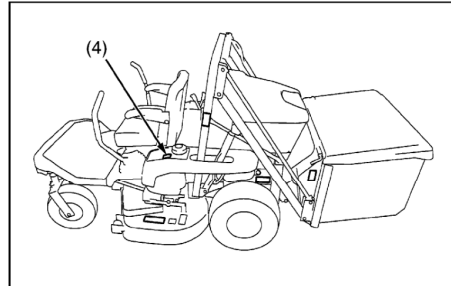
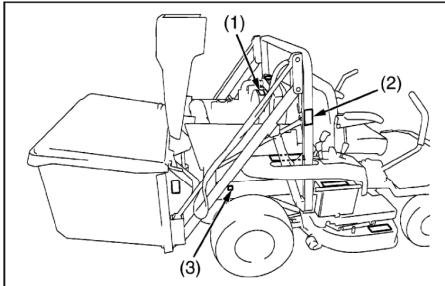
TO AVOID MACHINE RUNAWAY:

- DO NOT start engine by shorting across starter terminals or bypassing the safety start switch.

(3) Part No. K6082-6582-1

⚠ ATTENTION · CAUTION · ACHTUNG		
<p>LORSQUE VOUS UTILISEZ CET APPAREIL, IL EST CONSEILLÉ DE...</p> <p>1- RÉDUIRE LA VITESSE D'AVANCEMENT LORS DE LA COUPE D'HERBE LONGUE OU HUMIDE.</p> <p>2- NE JAMAIS LEVER LE BAC LORSQUE LE TRACTEUR SE TROUVE SUR UNE SURFACE INSTABLE, INÉGALE OU EN PENTE.</p> <p>3- NE JAMAIS CONDUIRE LE TRACTEUR OU PRENDRE DES VIRAGES À VIVE ALLURE LORSQUE LE BAC EST EN POSITION HAUTE.</p> <p>4- TOUJOURS DÉBRAYER LA PRISE DE FORCE AVANT DE LEVER LE BAC.</p> <p>5- ARRÊTER LE MOTEUR DU TRACTEUR AVANT TOUTE INTERVENTION SUR L'APPAREIL.</p> <p>6- POSER DES CONTREPOIDS À L'AVANT DU TRACTEUR.</p> <p>7- RAMENER LE BAC EN POSITION PRÉ-BEIMAGE AVANT DE LE REDESCENDRE.</p>	<p>WHEN USING THE UNIT YOU ARE ADVISED...</p> <p>1- TO REDUCE FORWARD SPEED WHEN CUTTING LONG OR WET GRASS.</p> <p>2- NEVER TO RAISE THE GRASSBOX WHILE THE TRACTOR IS ON SOFT, SLOPING OR UNEVEN GROUND.</p> <p>3- NEVER DRIVE THE TRACTOR OR TURN SHARPLY WHILE THE GRASSBOX IS RAISED.</p> <p>4- ALWAYS DISENGAGE THE PTO BEFORE RAISING THE GRASSBOX.</p> <p>5- ALWAYS TO STOP THE TRACTOR ENGINE BEFORE CLEARING ANY BLOCKAGES.</p> <p>6- TO FIT COUNTER WEIGHTS TO THE FRONT OF THE TRACTOR.</p> <p>7- ALWAYS RETURN THE GRASSBAG TO THE PRE DUMP POSITION BEFORE LOWERING INTO THE WORKING POSITION.</p>	<p>BEIM EINSATZ FOLGENDE HINWEISE BEACHTEN:</p> <p>1- BEI LANGEM ODER MASSEM GRAS FAHRGESCHWINDIGKEIT REDUZIEREN.</p> <p>2- BEI WEICHEM, ABSCHÜSSIGEM ODER UNEBENEM GELÄNDE DEN FANGBEHALTER NICHT HOCHFÄHREN.</p> <p>3- KEINE ENGEN KURVEN FAHREN MIT ANGEHOHEBENEM FANGBEHALTER.</p> <p>4- VOR DEM HOCHFÄHREN DES FANGBEHALTERS MAHFWERK AUSSCHALTEN.</p> <p>5- WÄHREND DER BESEITIGUNG VON VERSTOPFUNGEN MOTOR ABSTELLEN.</p> <p>6- KONTERGEWICHTE AM FRONTRAHMEN DES AUFSITZNAHERS ANBRINGEN.</p> <p>7- VOR DEM HERUNTERFAHREN DEN FANGBEHALTER ZURÜCK IN AUSGANGSSTELLUNG KIPPEN.</p> <p style="text-align: right; font-size: small;">K2011-65911</p>

3GZAAABCP002A



(1) Part No. 6C090-4958-2
Stay clear of engine fan and fan belt



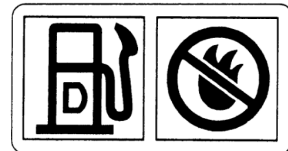
(2) Part No. K6082-6583-1
[HD type only]
● Do not put yourself below the grass container. If may fall accidentally

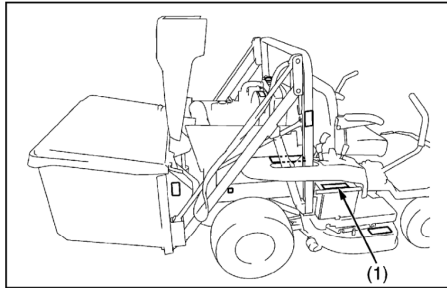


(3) Part No. K3512-4719-1
HOT SURFACE
DO NOT TOUCH



(4) Part No. K2011-6516-1
Diesel fuel No fire only





(1) Part No. 5H522-4112-1

TO AVOID INJURY FROM BATTERY GASES AND ACIDS



- Keep away cigarettes, flames or sparks.



- Always shield eyes and face from battery.



- Keep out of reach of children.



- Poison causes severe burns.
- Contains sulfuric acid.



- Read and understand operator's manual.



- Danger explosive gases.

CARE OF DANGER, WARNING AND CAUTION LABELS

1. Keep danger, warning and caution labels clean and free from obstructing material.
2. Clean danger, warning and caution labels with soap and water, dry with a soft cloth.
3. Replace damaged or missing danger, warning and caution labels with new labels.
4. If a component with danger, warning or caution label (s) affixed is replaced with new part, make sure new label (s) is (are) attached in the same location (s) as the replaced component.
5. Mount new danger, warning and caution labels by applying on a clean dry surface and pressing any bubbles to outside edge.

3GZAAABCP004A

0000001495E

SPECIFICATIONS

Model		GZD15-LD	GZD15-HD
Maximum gross power		11.2 kW (15 HP) *1	
Engine	Model	Z602-GZD15	
	Type	Indirect injection. Vertical, water-cooled, 4-cycle diesel engine	
	Number of cylinder	2	
	Bore and stroke	72.0 x 73.6 mm (2.83 x 2.90 in.)	
	Total displacement	599 cm ³ (36.6 cu.in.)	
	Rated revolution	3000 rpm	
	Combustion chamber	Spherical type (E-TVCS)	
	Fuel injection pump	Bosh MD type mini pump	
	Governor	Centrifugal ball mechanical governor	
	Injection nozzle	Bosh throttle type	
	Injection timing	0.30 to 0.33 rad. (17° to 19°) before T.D.C.	
	Injection order	1-2	
	Injection pressure	13.73 MPa (140 kgf/cm ² , 1990 psi)	
	Lubricating system	Forced lubrication by gear pump	
	Cooling system	Pressurized radiator, forced circulation with water pump	
	Lubricating oil	API Service classification CD, CE or CF, below 0 °C (32 °F) : SAE 10W, 10W-30 or 10W-40, 0 to 25 °C (32 to 77 °F) : SAE 20, 10W-30 or 10W-40, above 25 °C (77 °F) :SAE 30, 10W-30 or 10W-40	
Starting system	Electrical starter (12 V, 1.1 kW)		
Battery	65D23L (12V, 52A.H. at 5H.R.)		
Fuel	No.2-D Diesel fuel (ASTM D975) [No. 1-D diesel fuel, if temperature is below -10 °C (14 °F)]		
Capacities	Fuel tank	20 L (5.3 U.S.gals, 4.4 Imp.gals)	
	Engine crankcase	2.1 L (2.2 U.S.qts, 1.8 Imp.qts)	
	Engine coolant	1.4 L (1.5 U.S.qts, 1.2 Imp.qts)	
	Recovery tank	0.25 L (0.26 U.S.qts., 0.22 Imp.qts.)	
	Transmission case & rear axle gear case (RH & LH)	10.0 L (10.6 U.S.qts., 8.8 Imp.qts.)	
	Front PTO case	0.13 L (0.14 U.S.gals, 0.11 Imp.gals)	
	Mower gear case oil	0.15 L (0.16 U.S.qts, 0.13 Imp.qts)	
Tyres	Front	15 x 6.0 - 6 (4 PR) Rib	
	Rear	20 x 10.0 - 12 (4 PR) Turf	
Traveling speeds	Forward	0 to 13.5 km/h (0 to 8.4 mph)	
	Reverse	0 to 10.0 km/h (0 to 6.3 mph)	

NOTE:

*1 Manufacture's estimate

000001496E

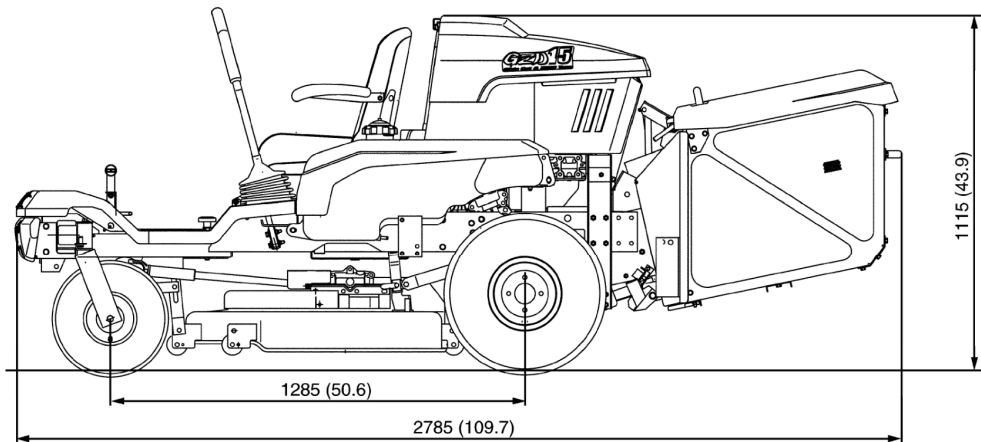
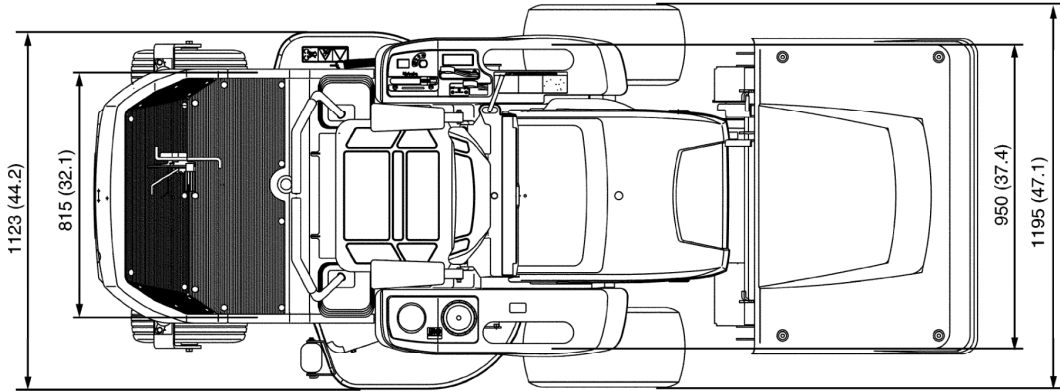
Model		GZD15-LD	GZD15-HD
Dimensions	Overall length (with grass collector)	2785 mm (109.7 in.)	
	Overall width (with mower)	1195 mm (47.1 in.)	
	Overall height (without ROPS)	1115 mm (43.9 in.)	1345 mm (53.0 in.)
	Wheel base	1285 mm (50.6 in.)	
	Tread	Front	815 mm (32.1 in.)
Rear		950 mm (37.4 in.), 850 mm (32.7 in.)	
Weight (with mower deck and grass collector)		510 kg (1124.6 lbs) / with 40 in. mower deck	540 kg (1190.7 lbs) / with 40 in. mower deck

000001497E

DIMENSIONS

[GZD15-LD]

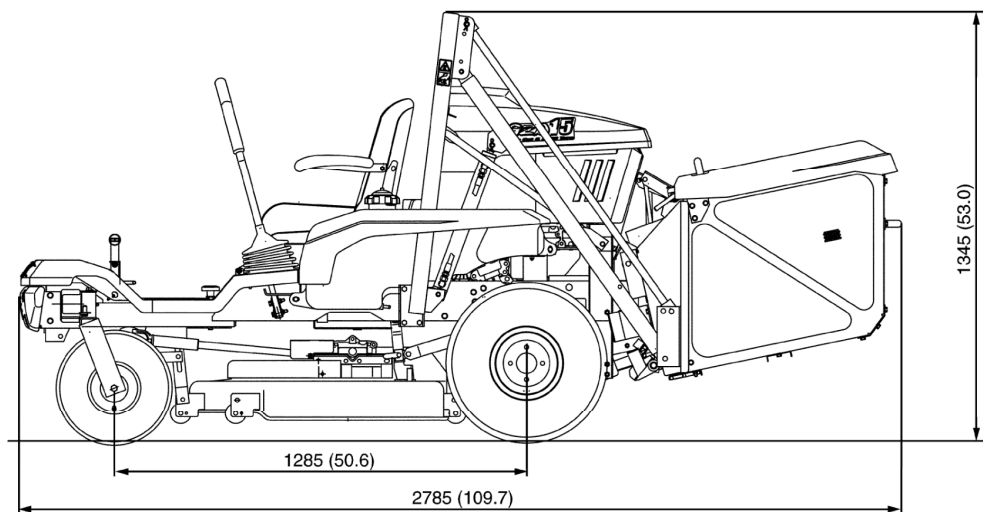
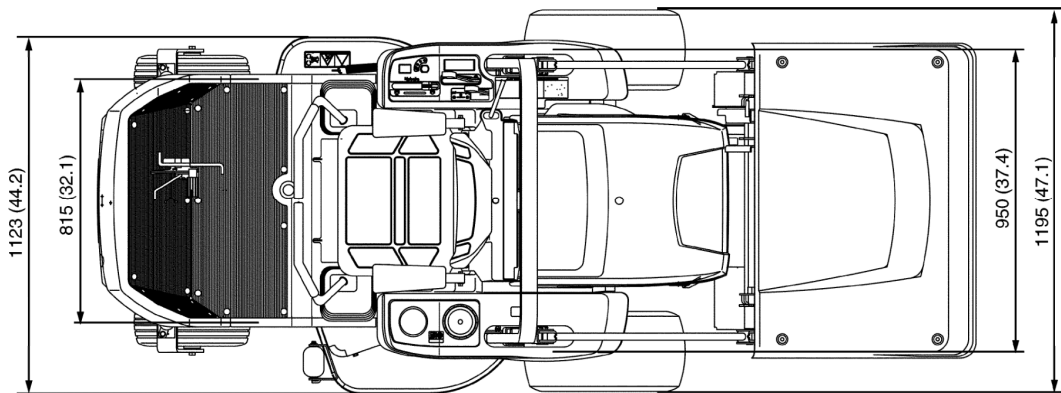
Unit: mm (in.)



3GZAAABFP002A

[GZD15-HD]

Unit: mm (in.)



3GZAAABFP001A

000001694E

G GENERAL

CONTENTS

1. IDENTIFICATION	G-1
2. GENERAL PRECAUTIONS.....	G-2
3. HANDLING PRECAUTIONS FOR ELECTRICAL PARTS AND WIRING.....	G-3
[1] WIRING.....	G-3
[2] BATTERY	G-5
[3] FUSE	G-5
[4] CONNECTOR.....	G-5
[5] HANDLING OF CIRCUIT TESTER.....	G-6
4. LUBRICANTS, FUEL AND COOLANT.....	G-7
5. TIGHTENING TORQUES.....	G-9
[1] GENERAL USE SCREWS, BOLTS AND NUTS	G-9
[2] METRIC SCREWS, BOLTS AND NUTS.....	G-9
[3] AMERICAN STANDARD SCREWS, BOLTS AND NUTS WITH UNC OR UNF THREADS	G-10
[4] PLUGS.....	G-10
6. MAINTENANCE.....	G-11
7. CHECK AND MAINTENANCE	G-13
[1] DAILY CHECK.....	G-13
[2] CHECK POINTS OF INITIAL 50 HOURS.....	G-19
[3] CHECK POINT OF INITIAL 100 HOURS.....	G-24
[4] CHECK POINTS OF EVERY 50 HOURS.....	G-25
[5] CHECK POINTS OF EVERY 100 HOURS.....	G-30
[6] CHECK POINT OF EVERY 150 HOURS.....	G-34
[7] CHECK POINTS OF EVERY 200 HOURS.....	G-34
[8] CHECK POINTS OF EVERY 400 HOURS.....	G-36
[9] CHECK POINTS OF EVERY 1 YEAR.....	G-36
[10] CHECK POINTS OF EVERY 2 YEARS.....	G-39
[11] OTHERS.....	G-40
8. SPECIAL TOOLS	G-50
[1] SPECIAL TOOLS FOR ENGINE	G-50
[2] SPECIAL TOOLS FOR MACHINE	G-56